

Botsford Lab Services Provides:

- Full range of testing service
- Most advanced testing systems in tri-county area
- Easy internet order entry
- View results via internet
- Hospital based lab with over 40 years experience



botsford
general
hospital

CONVENIENCE
QUALITY
SERVICE

BOTSFORD
Lab Services
Outreach Division

28050 Grand River Avenue,
Farmington Hills, MI 48336-5933

CONTACT Us

(248) 888-2580

Fax (248) 471-1553

labinfo@botsford.org

Affiliated with



In conjunction with



MAYO
Mayo Medical Laboratories

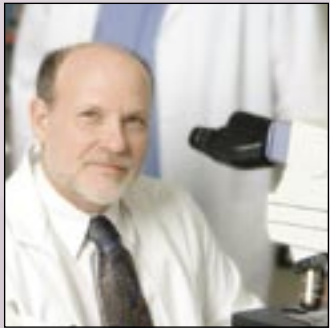
BOTSFORD
Lab Services
Outreach Division



botsford
general
hospital

*It's not just what we do.
It's how we do it.*

Test results are an integral part of your practice's daily routine. From diagnosing patients to selecting treatments, your lab service affects nearly every patient. When it comes to selecting your laboratory provider, choose the lab with the latest technology,



outstanding customer service and one that contributes to your office efficiency, Botsford Laboratory Services.

Our one-stop, full-service outreach division accepts all your lab work, saving

you time. At Botsford every customer counts, whether you are a physician or a patient you will receive personalized service to meet your individual needs.

As a hospital based lab, our team is experienced in disease diagnosis and understands the relationship between lab results, treatment options and monitoring disease progress. Botsford's Lab Services provides you easy access to accurate, timely results. Results you can trust.



"I was very pleased and surprised at the technology and how easy the process was for my staff ... what more could a physician's office ask for?"

- Cara Speier, D.O.

CONVENIENCE

- One lab for all your testing needs
- Easy internet order entry
- View results via internet, from office or home
- Reduce time spent checking for test results
- Accepts most insurance carriers
- Joint Venture Hospital Laboratories - JVHL
- Open 24 hours a day, 7 days a week
- Satellite blood drawing stations for patient convenience



BOTSFORD Lab Services Outreach Division



SERVICE

- Personalized service with competitive prices
- Pathologist and Medical Technologists available for consults
- Dedicated billing department with direct customer service access for inquiries
- We work with your office to minimize billing inconveniences to your patients
- Board Certified Cytopathologist
- Pathologist specialist in Blood Banking
- Mechanized Anatomical Pathology and Liquid Based Cytology



"The Customer Service is second to none. This technology is an invaluable asset for my practice."
- Kevin Frankel, D.O.

QUALITY

- Bar code technology to reduce clerical errors and increase accuracy of patient identification
- Fully automated robotic hematology and chemistry testing
- Adheres to the American Osteopathic Associations stringent quality regulations for hospital laboratories
- Several of the lab staff are faculty at the University of Michigan or Wayne Sate University
- Affiliated with University of Michigan MLabs and Mayo Medical Laboratories, the reference laboratory for Mayo Clinic
- Fully accredited and inspected by the College of American Pathologist
- CLIA Laboratory Certificate of Accreditation (Clinical Laboratory Improvement Amendments)
- American Association of Blood Banks

